

# SCHEDULE A

## PROPOSED SUBDIVISION

1085499 BC LTD

PARCEL A (DD 3807911) OF SECTION 13, RANGE 3, CRANBERRY DISTRICT, EXCEPT PART IN PLAN 21898

ADDRESS : 2301 EXTENSION ROAD, NANAIMO, B.C.

PROJECT SURVEYOR : D.W. HOLME

DRAWN BY : DAW DATE : NOV. 16/23

OUR FILE : 89925 REVISION :



14 - 3411 SHENTON ROAD, NANAIMO, B.C. V9T 2H1  
TEL: 250-759-4631 FAX: 250-759-4650  
EMAIL: nanaimo@jeanderson.com  
NANAIMO - VICTORIA - PARKSVILLE - CAMPBELL RIVER

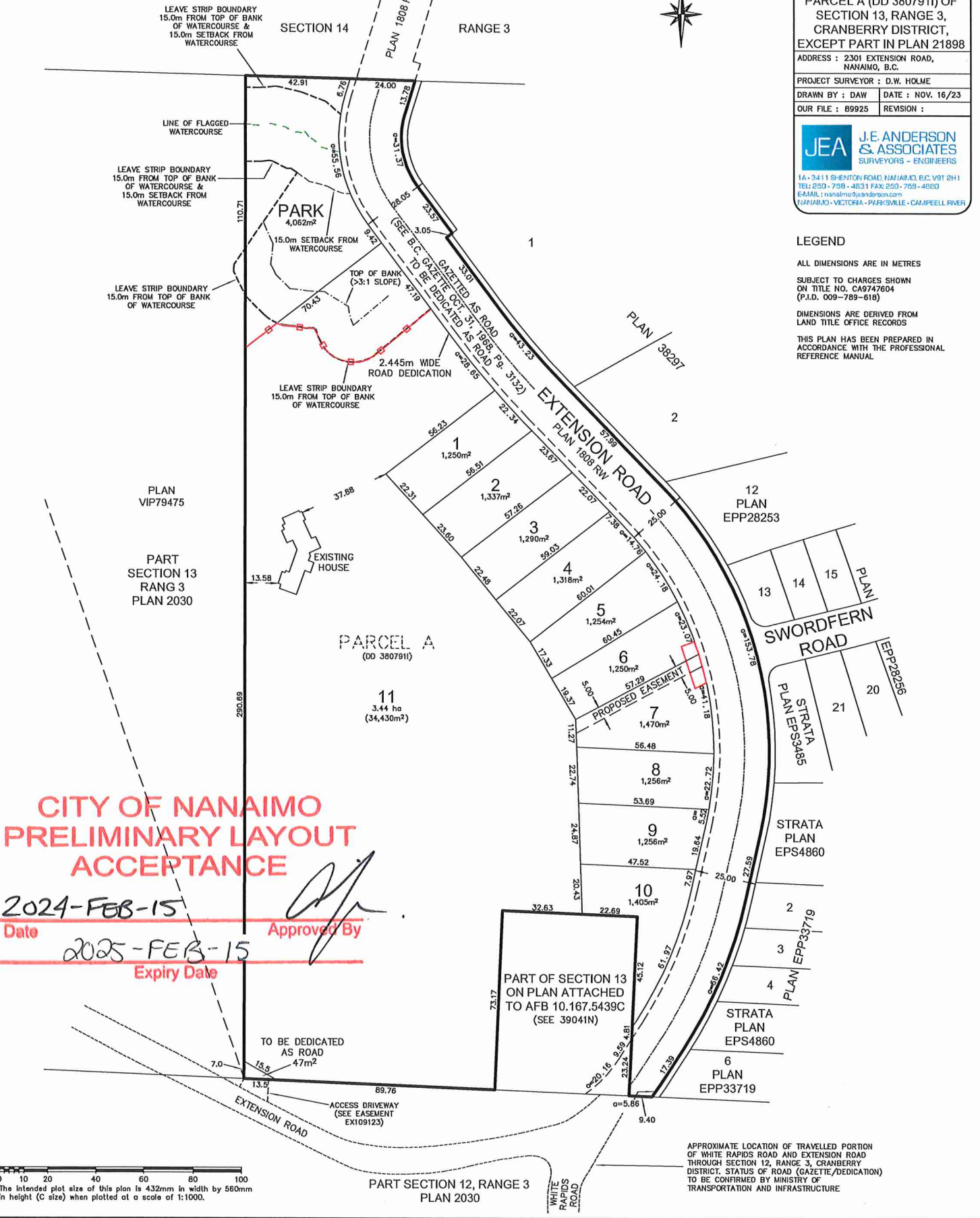
### LEGEND

ALL DIMENSIONS ARE IN METRES

SUBJECT TO CHARGES SHOWN ON TITLE NO. CA9747604 (P.I.D. 009-789-618)

DIMENSIONS ARE DERIVED FROM LAND TITLE OFFICE RECORDS

THIS PLAN HAS BEEN PREPARED IN ACCORDANCE WITH THE PROFESSIONAL REFERENCE MANUAL



**CITY OF NANAIMO  
PRELIMINARY LAYOUT  
ACCEPTANCE**

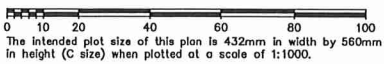
**2024-FEB-15**

Date

Approved By

**2025-FEB-15**

Expiry Date



APPROXIMATE LOCATION OF TRAVELLED PORTION OF WHITE RAPIDS ROAD AND EXTENSION ROAD THROUGH SECTION 12, RANGE 3, CRANBERRY DISTRICT. STATUS OF ROAD (GAZETTE/DEDICATION) TO BE CONFIRMED BY MINISTRY OF TRANSPORTATION AND INFRASTRUCTURE